

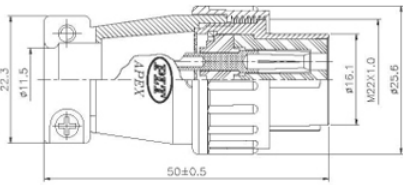
SHELL SIZE



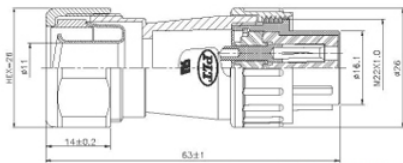
PLS-20 Series **NEW! 新產品**

PLS Series 方形连接器

Plug Female Contact



PLS-20◆-PF X-R



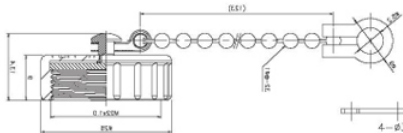
PLS-20◆-GPF3 X-R

3=轉接3/8"軟管
Connected with 3/8" conduit



PLS-20◆-WGPF3 X-R

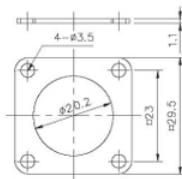
3=轉接3/8"尼龍管
Connected with 3/8" nylon tube



PLS-20C-RCaC-R

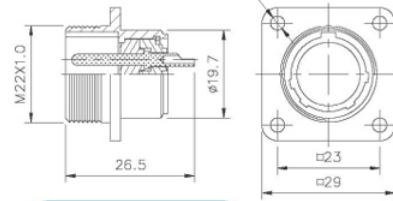


Material: Zinc Alloy
材質: 鋅合金



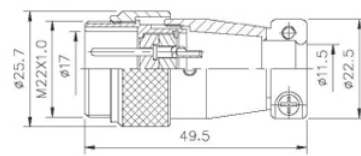
ACCESSORY:
RUBBER GASKET FOR PLS-20◆-RM

Socket Male Contact

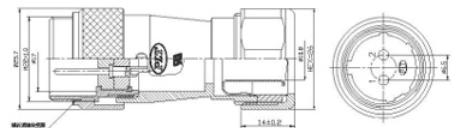


PLS-20◆-RM-R

Adapter Male Contact



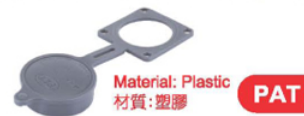
PLS-20◆-ADM-R



PLS-20◆-ADGM-R



RUBBER TUBE FOR PLS-20◆-PF



ACCESSORY:
Material: Plastic
材質: 塑膠

PAT A-587PX

◆ No. of contacts	2	3	4	5	7	12		
Contacts Configuration								
Rated current / voltage	15A 250V	15A 250V	10A 250V	10A 250V	10A 250V	5A 250V		
Operating voltage limit (AC.V.rms)	250	250	250	250	250	250		
Withstanding voltage (AC.V. rms) 1 minute	1500	1500	1000	1000	1000	1000		
Insulation resistance (MΩ MIN.) at DC 500V	2000	2000	2000	2000	2000	1000		
Contact resistance (mΩ MAX.) at DC 1A	3	3	3	3	3	5		
Solder internal diameter	1.8	1.8	1.6	1.6	1.6	1.2		

★NEW

★NEW